



PT. BUSUR KILAT PERKASA
General Supplier Pipa, Fitting, Aksesoris & Valve Pvc

Jl. Raya Pondok Jagung Timur No. 07
Kec. Serpong Utara, Kota Tangerang Selatan
Email: marketing@busurkilat.com
Website : www.busurkilat.com
(021) 539 6364

ISO 9001

峰展塑膠
FENG CHAN

thermoplastic fittings and valves



卓越品質 完美呈現 流體技術

The wonderful World



峰展塑膠股份有限公司沿革

- 1988 年於台中沙鹿成立,專門生產製造塑膠管配件
行銷台灣
- 1990 年以快速交貨及最具競爭力之價格,迅速拓展海內外
客戶群
- 1992 年銷售市場:美國、馬來西亞、新加坡、印尼、泰國、大
陸及韓國
- 2000 年增購設備-射出成型機至20台,以提升產能符合客戶需求及服務
- 2002 年遷廠至台中縣梧棲鄉運工業區、佔地3000坪,並多角化
設計、發展新產品、模具製造、加工研發
- 2003 年通過ISO9001認證,除全面提升國內服務品質及管
理,更致力於國內外客戶的互動與拓展
- 2006 年取得CNS2334認證

About Feng Chan Plastic Co., Ltd/A. Company history:

- 1988 FENG CHAN was established in Taichung, Taiwan. Started to manufacture plastic fittings for domestic market.
- 1990 Attributing to the quick delivery and competitive prices, our market share are grown in local and overseas markets.
- 1992 Having triumph in entering into North American, Malaysian, Singaporean, Indonesian, Thai, Chinese and Korean markets.
- 2000 Increasing our facility to 20 injection-molding machines in total in order to optimize our capacity and service quality.
- 2002 Move our manufacturing plant to Wuchi Industrial Park. The total area surface is 910 square meters. With the expertise we have, we began dedicating to Research & Development, including manufacture and development of molds.
- 2003 Obtaining Quality System of ISO 9001:2000 Certification With this event, we are aiming at promoting our service quality and internal quality management. In addition, we are getting more and more aggressive in entering global markets.
- 2006 Acquired CNS2334 Certification

產品用途 Product Application

各種給水管及相關產品,可用於工業應用、船舶設備、游泳池、溫泉浴場、農業灌溉、水源工程或大樓、工廠、環境工程廢水處理之流量與壓力控制

Water supply engineering,Electrical engineering,Construction engineering,Ground-water engineering,Fishery use for plastic ,Agricultural irrigation,Well drilling engineering,Free way engineering.

認證證書 Certification



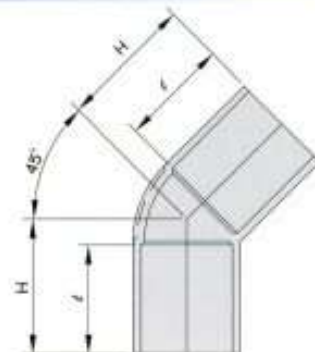
關於產品 About Product

尺寸：1/2"~16"
 材質：PVC, CPVC, ABS, UPVC
 顏色：淺灰，深灰，白色，桔色
 (其他依客戶需求生產的顏色)
 品質：通過ISO 9001/CNS 2334品質認證

SIZE：1/2"~16"
 MATERIAL：PVC, CPVC, ABS, UPVC
 COLOR：LIGHT GREY, DARK GREY, WHITE, ORANGE
 (OTHER COLORS AVAILABLE ON REQUEST)
 QUALITY：PASS THE ISO 9001/CNS 2334



45° 彎頭 45° ELBOW



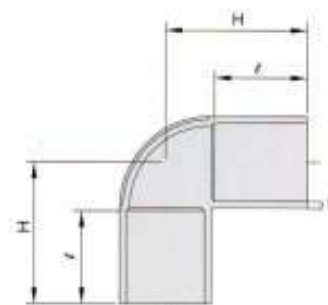
◎ 排水 Drainage

規格 SIZE	ℓ	H
1-1/2" × 2mm	22	34
2" × 2mm	25	40
2-1/2" × 2.5mm	35	53
3" × 3mm	40	63
3-1/2" × 3mm	50	73.5
4" × 3.5mm	50	78
5" × 3.5mm	65	100
6" × 4mm	80	120
8" × 7.5mm	100	155
10" × 8.5mm	130	191
12" × 10mm	150	223

◎ 給水 Water Supply(45°)

規格 SIZE	ℓ	H
40 1-1/2"	55	69
50 2"	63	80
65 2-1/2"	69	90
80 3"	72	95
90 3-1/2"	80	105
100 4"	92	121
125 5"	112	150
150 6"	140	185
200 8"	172	224
250 10"	185	248
300 12"	260	380

90° 彎頭 90° ELBOW



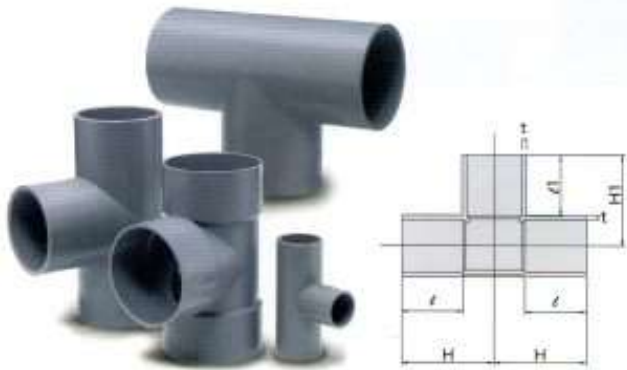
◎ 排水 Drainage

規格 SIZE	ℓ	H
1-1/2" × 2mm	22	48
2" × 2mm	22	48
2-1/2" × 2.5mm	25	58
3" × 3mm	40	88
3-1/2" × 3mm	50	102
4" × 3.5mm	50	112
5" × 3.5mm	65	140
6" × 4mm	80	168
8" × 7.5mm	100	215
10" × 8.5mm	130	269
12" × 10mm	150	316
14" × 11mm	184	340

◎ 給水 Water Supply (90°)

規格 SIZE	ℓ	H	t
16 1/2"	30	43	3.5 ± 0.40
20 3/4"	35	50	3.5 ± 0.40
28 1"	40	60	3.5 ± 0.40
35 1-1/4"	44	68	4.0 ± 0.40
40 1-1/2"	55	82	4.5 ± 0.50
50 2"	63	96	5.0 ± 0.50
65 2-1/2"	69	110	5.0 ± 0.50
80 3"	72	120	6.0 ± 0.60
100 4"	92	152	7.5 ± 0.70
125 5"	112	188	8.0 ± 0.70
150 6"	140	228	9.0 ± 0.80
200 8"	172	288	10.5 ± 0.90
250 10"	185	326	16 ± 0.9
300 12"	260	450	20 ± 0.9

T型三通 TEE & REDUCING TEE



給水 Water Supply

規格 SIZE	ℓ	ℓ1	H	H1	t	
16×16	1/2"	30	30	43	43	4mm
20×16	3/4"×1/2"	35	30	48	45	4mm*4mm
20×20	3/4"	35	35	50	50	4mm
28×16	1"×1/2"	40	30	53	49	4mm*4mm
28×20	1"×3/4"	40	35	55	54	4mm*4mm
28×28	1"	40	40	60	60	4mm
35×16	1-1/4"×1/2"	44	30	57	53	3.5mm*3mm
35×20	1-1/4"×3/4"	44	35	59	58	3.5mm*3mm
35×28	1-1/4"×1"	44	40	64	63	3.5mm*3mm
35×35	1-1/4"	44	44	68	68	3.5mm
40×16	1-1/2"×1/2"	55	30	68	56	4mm*3mm
40×20	1-1/2"×3/4"	55	35	70	62	4mm*3.5mm
40×28	1-1/2"×1"	55	40	75	67	4mm*3.5mm
40×35	1-1/2"×1-1/4"	55	44	79	71	4mm*3.5mm
40×40	1-1/2"	55	55	82	82	4mm
50×16	2"×1/2"	63	30	76	64	5mm*3mm
50×20	2"×3/4"	63	35	78	68	5mm*4mm
50×28	2"×1"	63	40	82	74	5mm*4mm
50×35	2"×1-1/4"	63	44	86	77	5mm*4mm
50×40	2"×1-1/2"	63	55	90	88	5mm*4mm
50×50	2"	63	63	96	96	5mm*5mm
65×40	2-1/2"×1-1/2"	69	55	96	96	5mm*4mm
65×50	2-1/2"×2"	69	63	102	104	5mm*5mm
65×65	2-1/2"	69	69	110	110	5mm
80×20	3"×3/4"	72	35	90	82	6mm*3mm
80×28	3"×1"	72	40	94	87	6mm*4mm
80×40	3"×1-1/2"	72	55	100	102	6mm*4.5mm
80×50	3"×2"	72	63	105	110	6mm*5mm
80×65	3"×2-1/2"	72	69	113	117	6mm*5mm
80×80	3"	72	72	120	120	6mm
100×40	4"×1-1/2"	92	55	120	115	7mm*4mm
100×50	4"×2"	92	63	125	122	7mm*5mm
100×65	4"×2-1/2"	92	69	136	134	7mm*5mm
100×80	4"×3"	92	72	140	132	7mm*6mm
100×100	4"	92	92	152	152	7mm*4mm
125×80	5"×3"	112	72	160	148	7.5mm*5.5mm
125×100	5"×4"	112	92	174	168	7.5mm*7mm
125×125	5"	112	112	188	188	7.5mm
150×50	6"×2"	140	63	175	153	7mm*5mm
150×65	6"×2-1/2"	140	69	183	160	7mm*5mm
150×80	6"×3"	140	72	193	160	7mm*6mm
150×100	6"×4"	140	92	202	182	7mm*7mm
150×125	6"×5"	140	112	214.5	200	7mm*7mm
150×150	6"	140	140	228	228	7mm
200×100	8"×4"	172	92	236.5	204	9.5mm*7mm
200×150	8"×6"	172	140	264	252	10mm*7mm
200×200	8"	172	172	287.5	287	10mm*10mm
250×250	10"	185	185	325	325	11mm
250×150	10"×6"	185	140	271.5	279	11mm*7mm
250×200	10"×8"	185	172			11mm*10mm

排水 Drainage

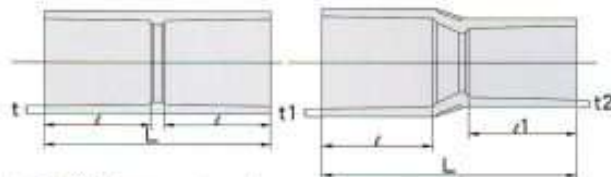
規格 SIZE	ℓ	H	ℓ1	H1
1-1/2"×2mm	22	49	22	49
2"×1-1/2"×2mm	25	52	22	55
2"×2mm	25	59	25	59
2-1/2"×3/4"×3mm	40	58	26.5	69
2-1/2"×1-1/2"×3mm	35	63	22	55
3"×1-1/2"×3mm	40	67	22	70
3"×2"×3mm	40	73	25	73
3"×3mm	40	88.5	40	88
4"×2"×3.5mm	50	85.5	25	85
4"×3"×3.5mm	50	98	40	101
4"×3.5mm	50	112	50	112
5"×3.5mm	65	145	65	145
6"×3"×4mm	80	127	40	126
6"×4"×4mm	80	142	50	137
6"×4mm	80	167	50	167
8"×4"×7.5mm	100	165	50	165
8"×6"×7.5mm	100	185	80	195
8"×7.5mm	100	215.5	100	215.5
10"×8.5mm	185	280	185	290
12"×12mm	150	320	155	330
12"×6"×12mm	150	320	150	330
12"×8"×7.5mm	150	320	155	330
12"×10"×8.5mm	150	320	155	330

止閥接頭 MALE ADAPTER



規格 SIZE	ℓ	螺牙 THREAD			L	t
		d	ℓ1			
16	1/2"	30	PT1/2"	15	56	4mm
20	3/4"	35	PT3/4"	17	64	4mm
28	1"	40	PT1"	19	71	4mm
35	1-1/4"	44	PT1-1/4"	22	80	4mm
40	1-1/2"	55	PT1-1/2"	22	92	5mm
50	2"	63	PT2"	26	106	5mm
65	2-1/2"	70	PT2-1/2"	30	120	5mm
80	3"	72	PT3"	33	126	5.5mm
100	4"	92	PT4"	40	146	7mm

直接頭 & 異徑直接頭 COUPLING & REDUCING COUPLING



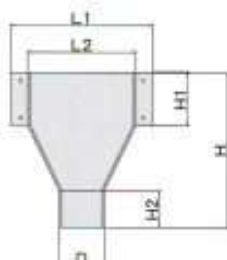
給水 Water Supply

規格 SIZE	ℓ	ℓ1	L	t	t1/t2
16	1/2"	30	65	3.5±0.40	
20	3/4"	35	77	3.5±0.40	
28	1"	40	87	3.5±0.40	
35	1-1/4"	44	95	4.0±0.40	
45	1-1/2"	55	117	4.0±0.40	
50	2"	63	133	5.0±0.50	
65	2-1/2"	69	147	5.0±0.50	
80	3"	72	155	6.0±0.50	
100	4"	92	200	7.5±0.70	
125	5"	112	235	7.5±0.70	
150	6"	140	300	9.0±0.80	
200	8"	172	360	10.0±0.90	
250	10"	185	400	12.0±0.90	
300	12"	258	522	12.5±0.90	
20×16	3/4"×1/2"	35	30	72	3.5±0.40 / 3.5±0.40
28×16	1"×1/2"	40	30	86	3.5±0.40 / 3.5±0.40
28×20	1"×3/4"	40	35	88	3.5±0.40 / 3.5±0.40
40×16	1-1/2"×1/2"	55	30	114	4.5±0.50 / 3.5±0.40
40×20	1-1/2"×3/4"	55	35	110	4.5±0.50 / 3.5±0.40
40×28	1-1/2"×1"	55	40	112	4.5±0.50 / 3.5±0.40
40×35	1-1/2"×1-1/4"	55	44	108	4.5±0.50 / 4.5±0.50
50×16	2"×1/2"	63	30	120	4.5±0.50 / 3.5±0.40
50×20	2"×3/4"	63	35	135	5.0±0.50 / 3.5±0.40
50×28	2"×1"	63	40	136	4.5±0.50 / 4.0±0.40
50×35	2"×1-1/4"	63	44	136	4.5±0.50 / 4.5±0.50
50×40	2"×1-1/2"	63	55	136	5.0±0.50 / 4.5±0.50
65×40	2-1/2"×1-1/2"	69	55	150	5.0±0.50 / 4.5±0.50
65×50	2-1/2"×2"	69	63	153	5.0±0.50 / 5.0±0.50
80×40	3"×1-1/2"	72	55	165	6.0±0.60 / 5.0±0.50
80×50	3"×2"	72	63	165	6.0±0.60 / 5.0±0.50
80×65	3"×2-1/2"	72	69	165	6.0±0.60 / 5.0±0.50
100×40	4"×1-1/2"	92	55	190	7.5±0.70 / 5.0±0.50
100×50	4"×2"	92	63	208	7.5±0.70 / 5.0±0.50
100×65	4"×2-1/2"	92	69	190	7.5±0.70 / 5.0±0.50
100×80	4"×3"	92	72	190	7.5±0.70 / 6.0±0.60
125×100	5"×4"	112	92	225	7.5±0.70 / 7.5±0.70
150×65	6"×2-1/2"	140	69	250	9.0±0.80 / 5.0±0.50
150×80	6"×3"	140	72	260	9.0±0.80 / 6.0±0.60
150×100	6"×4"	140	92	280	9.0±0.80 / 7.5±0.70
150×125	6"×5"	140	112	295	9.0±0.80 / 7.5±0.70
200×100	8"×4"	172	92	340	10.0±0.90 / 7.5±0.70
200×125	8"×5"	172	112	345	10.0±0.90 / 7.5±0.70
200×150	8"×6"	172	140	350	10.0±0.90 / 9.0±0.80
250×150	10"×6"	195	137	350	12.0±0.90 / 9.0±0.80
250×200	10"×8"	185	172	420	12.0±0.90 / 10.0±0.90

排水 Drainage

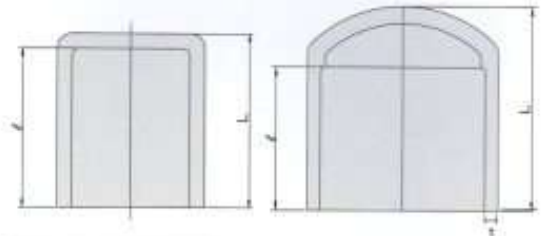
規格 SIZE	ℓ	ℓ1	L
1-1/4"×3mm	20		43
1-1/2"×3mm	22		47
2"×3mm	25		53
2-1/2"×3mm	35		73
3"×3mm	40		84
5"×3.5mm	65		134
6"×4mm	80		164
2"×1-1/2"×2mm	25	22	67
2-1/2"×1-1/2"×3mm	35	20	78
2-1/2"×2"×3mm	35	25	81
3"×1-1/2"			120
3"×2"×3mm	40	25	90
4"×2"×3.5mm	50	25	105
4"×2-1/2"			130
4"×3"×3.5mm	50	40	120
5"×2"			190
5"×2-1/2"			185
5"×3"			190
5"×4"×3.54mm	65	50	150
6"×3"			
6"×4"×4mm	80	50	170
6"×5"×4mm	80	65	170

漏斗 FUNNEL



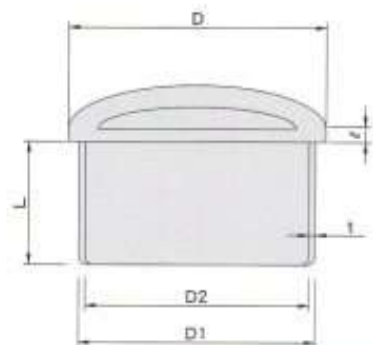
規格 SIZE	D	L1	L2	H	H1	H2
6" 40×40	165	515	396.5	590	201	153
8" 35×35	197.5	403	403	353	150.5	142
8" 40×40	217.6	514	397	590	201	207

管帽 CAP



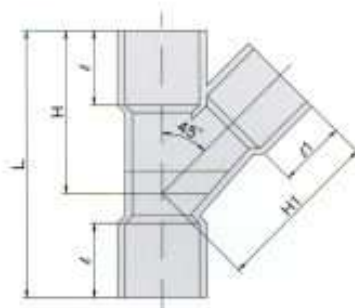
規格 SIZE		φ	L	t
16	1/2"	30	34.5	3.5±0.40
20	3/4"	35	39.5	3.5±0.40
28	1"	40	45	3.5±0.40
35	1-1/4"	44	49	4.0±0.40
40	1-1/2"	55	59.5	4.5±0.50
50	2"	63	68	5.0±0.50
65	2-1/2"	69	100	5.0±0.50
80	3"	72	107	6.0±0.50
100	4"	92	138	7.5±0.60
125	5"	112	168	8.0±0.70
150	6"	140	205	9.0±0.80
200	8"	172	260	10.5±0.90
250	10"	187	252	12.0±0.90
300	12"	258	261	12.5±0.90

管筏用管帽 CAP FOR PIPE RAFT



規格 SIZE	D1	D2	D	t	L	φ
4"	109	103	116	3.0	45	7
5"	136	129.6	143.5	3.2	60	11
6"	156	150	164.5	3.0	65	18
8"	208	197	216	5.5	70	13
10"	253.6	241.6	266.4	6.0	89	21
12"	303.4	286.4	317.4	8.5	100	21
14"	353	337.5	368	8	120	30

45° Y型三通 45° WYE



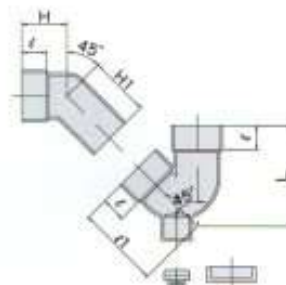
◎ 排水 Drainage

規格 SIZE	ℓ	H	ℓ1	H1	L
2"×1-1/2"×2mm	25	91	22	91	124
2"×2mm	25	100	25	103	142
2-1/2"×2"×3mm	35	118	25	114	162
2-1/2"×3mm	35	127	35	133	185
3"×2"×3mm	40	130	25	123	170
3"×3mm	40	152	40	154	213
3-1/2"×1-1/2"×3mm	50	136	22	122	177
3-1/2"×3mm	50	171.5	50	177.5	247
4"×2"×3.5mm	50	152	25	142	195
4"×3"×3.5mm	50	173	40	171	238
4"×3.5mm	50	193	50	194	273
6"×3"×4mm	80	227	40	206	300
6"×4"×4mm	80	245	50	230	340
6"×4mm	80	285	80	285	410
8"×4"×7.5mm	100	292	50	268	380
8"×6"×7.5mm	100	328	80	326	445
8"×7.5mm	100	365	100	375	520

◎ 給水 Water Supply

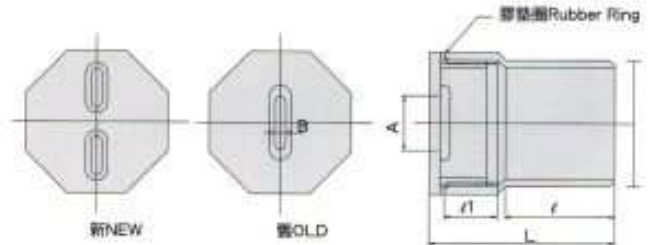
規格 SIZE	ℓ	ℓ1	H	H1	L
50×40 2"×1-1/2"	63	55	132	128	202
50×50 2"	63	63	141	142	220
65×65 2-1/2"	75	75	160	152	257
65×50 2-1/2"×2"	75	68	160	135	257
80×50 3"×2"	72	63	164	164	239
80×80 3"	72	72	180	188	280
100×50 4"×2"	92	63	195	185	285
100×80 4"×3"	92	72	213	202	319
100×100 4"	92	92	230	240	355
125×50 5"×2"	112	63	233	192	337
125×80 5"×3"	112	72	252	216	372
125×100 5"×4"	112	92	272	252	415
125×125 5"	112	112	282	292	434
150×50 6"×2"	140	63	270	228	385
150×80 6"×3"	130	72	282	240	412
150×100 6"×4"	130	92	294	274	435
150×150 6"	140	140	344	352	530
200×50 8"×2"	172	63	327	258	445
200×80 8"×3"	172	72	345	282	485
200×100 8"×4"	172	92	362	316	520
200×150 8"×6"	172	140	400	394	600
200×200 8"	172	172	446	433	690
250×150 10"×6"	185	140	450	430	625
250×200 10"×8"	185	172	510	450	696
250×250 10"	200	200	555	460	783

P型存水接頭 "P" TRAP WITH SOLVENT WELD JOINT AND CLEANOUT PLUG



規格 SIZE	ℓ	ℓ1	L
2"×2mm小牙 (31) 排水 Drainage	25	100	135
2"×4mm小牙 (31) 給水 Water Supply	63	135	190
2"×2mm大牙 (73.5) 排水 Drainage	33	150	152
2"×4mm大牙 (73.5) 給水 Water Supply	60	150	182
3"×4mm大牙 (73.5) 排水 Drainage	45	150	188
4"×4mm大牙 (73.5) 排水 Drainage	55	180	254.5

清除孔接頭 CLEANOUT BUSHING



規格 SIZE		A	B	l	l ₁	L
50	2"	30	4.5	59	25	98
80	3"	50	4.5	75	38	131
100	4"	50	4.5	93	47	164
125	5"	80	10	120	50	194
150	6"	125	10	128	50	204
200	8"	160	10	175	50	255
250	10"	195	16	195	69	275

順T接頭 SANITARY TEE



◎ 給水 Water Supply

規格 SIZE		l	l ₁	H	H ₁	L
50×40	2"×1-1/2"	63	55	114	118	192
50×50	2"	63	63	114	127	200
65×65	2-1/2"	68	68	132	140	234
65×50	2-1/2"×2"	73	65	125	133	234.5
80×50	3"×2"	72	63	140	145	235
80×80	3"	72	72	177	172	280
100×40	4"×1-1/2"	95	50	132	157	286
100×50	4"×2"	92	63	154	152	270
100×65	4"×2-1/2"	95	70	167	157	286
100×80	4"×3"	92	72	194	182	318
100×100	4"	92	92	224	219	355
125×100	5"×4"	112	92	235	219	388
125×125	5"	112	112	252	233	416
150×80	6"×3"	130	72	230	207	420
150×100	6"×4"	130	92	246	234	425
150×150	6"	140	140	290	295	495
200×100	8"×4"	172	92	262	263	510
200×150	8"×6"	172	140	307	320	560
200×200	8"	172	172	347	360	615
250×250	10"	175	172	321	421	660
250×150	10"×6"	185	140	332	345	588
250×200	10"×8"	190	180	290	410	615

◎ 排水 Drainage

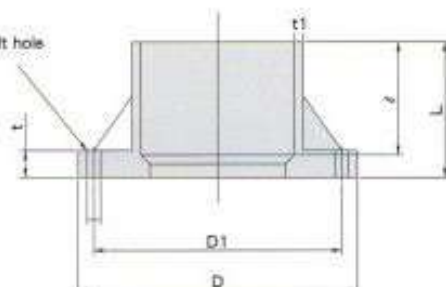
規格 SIZE	l	H	l ₁	H ₁	L
1-1/2"×2mm	22	68	22	68	110
2"×2mm	25	84	25	88	133
2-1/2"×2"×3mm	35	93	25	92	153
3"×1-1/2"×3mm	40	90	22	100	147
3"×2"×3mm	40	98	25	105	162
3"×3mm	40	123	40	125	198
3-1/2"×3mm	50	130	50	140	226
4"×3"×3.5mm	50	133	40	140	220
4"×3.5mm	50	155	50	155	255
6"×3"×4mm	80	151	40	170	272
6"×4"×4mm	80	170	50	180	300
6"×4mm	80	238	80	238	390
8"×7.5mm	100	300	100	300	490

法蘭片 FLANGE



螺孔數 N

No. of bolt hole



規格 SIZE	D	D1	ℓ	t	L	t1
15 1/2"	95	70	30	14	35	4m/m
20 3/4"	100	75	35	15	40	4m/m
25 1"	125	90	40	15	46	5.5m/m
30 1-1/4"	135	100	44	16	51	5m/m
40 1-1/2"	140	105	55	17	62	5.5m/m
50 2"	155	120	63	17	71	7m/m
65 2-1/2"	175	140	69	18	70	7m/m
80 3"	185	150	72	20	73	7m/m
100 4"	210	175	92	20	93	8m/m
125 5"	250	210	112	20	114	8m/m
150 6"	280	240	140	22	142	10m/m
200 8"	330	290	172	22	161	10m/m
250 10"	400	355	185	24	167	11m/m
300 12"	445	400	230	30	167	11m/m
350 14"	489	438	262	35	300	13m/m

套銅接頭 FITTING W/BRASS INSERT

◎ 套銅三通

Tee W / Brass Insert

◎ 套銅彎頭

Elbow W / Brass Insert

◎ 套銅接頭

Socket W / Brass Insert



◎ 規格 SIZE: 1/2", 3/4", 1"



◎ 規格 SIZE: 1/2", 3/4", 1", 3/4"x1/2"

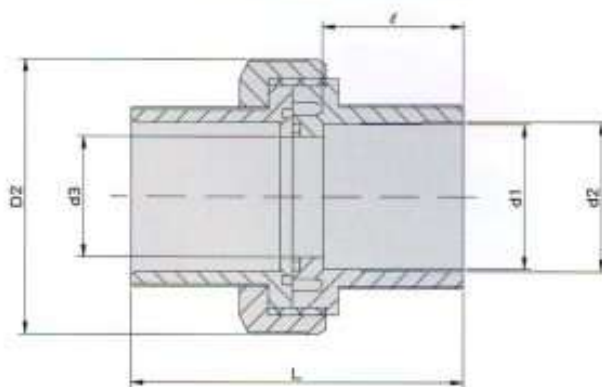


◎ 規格 SIZE: 1/2", 3/4", 1"

由令接頭 UNION

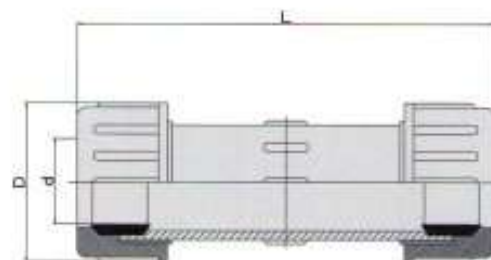


◎ 接口 END : 平口 SOCKET/牙口 THREADED



規格 SIZE	Thd/in BSPT	CNS(BS)			D2	L
		d1	d2	ℓ		
15mm(1/2")	14	16.5	21.5	16.5	46	54
20mm(3/4")	14	19.5	26.9	19.5	55	62
25mm(1")	11	22.5	33.7	22.5	66	69
30mm(1-1/4")	11	27	42.4	27	82	85
40mm(1-1/2")	11	30	48.4	30	98	87
50mm(2")	11	36	60.5	36	120	95
65mm(2-1/2")	11	44.45	75.3	44.45	139	114
80mm(3")	11	47.63	89.1	47.63	155	126
100mm(4")	11	114.1	114.5	57.15	225	160

快速接頭 COMPRESSION COUPLING



規格 SIZE	d	L	D
1/2"	23	100	45
3/4"	28	109	53
1"	35	114	61
1-1/4"	43.3	129	72
1-1/2"	49.4	139	79
2"	65	153	92
2-1/2"	74.2	228	114
3"	90	250	134
4"	117.8	285	157

單把手兩片式球閥
PVC BALL VALVE(TWO PIECES)



- ◎ 規格 SIZE: 1/2"~6"
- ◎ 接口 END: 平口 SOCKET/牙口 THREADED
- ◎ 顏色 COLOR: 灰色 GREY
- ◎ 標準 AVAILABLE STANDARDS: JIS, ANSI, BS, DIN, CNS

單把手不鏽鋼球閥
BALL VALVE-STAINLESS STEEL(TWO PIECES)



- ◎ 規格 SIZE: 1/2"~6"
- ◎ 接口 END: 平口 SOCKET/牙口 THREADED
- ◎ 顏色 COLOR: 灰色 GREY
- ◎ 標準 AVAILABLE STANDARDS: JIS, ANSI, BS, DIN, CNS

雙由令球閥
DOUBLE UNION BALL VALVE



- ◎ 規格 SIZE: 1/2"~4"
- ◎ 接口 END: 平口 SOCKET/牙口 THREADED
- ◎ 顏色 COLOR: 灰色 GREY
- ◎ 標準 AVAILABLE STANDARDS: JIS, ANSI, BS, DIN, CNS

把手式碟閥
BUTTERFLY VALVE-LEVER HANDLE



- ◎ 規格 SIZE: 2"~16"
- ◎ 接口 END: 平口 SOCKET/牙口 THREADED
- ◎ 顏色 COLOR: 灰色 GREY
- ◎ 標準 AVAILABLE STANDARDS: JIS, ANSI, BS, DIN, CNS

福特底閥 FOOT VALVE

◎ 長型福特
Foot Valve



◎ 規格 SIZE: 3/4"~3"

◎ 接口 END: 平口 SOCKET/牙口 THREADED

◎ 顏色 COLOR: 灰色 GREY

◎ 標準 AVAILABLE STANDARDS:
CNS, JIS, ANSI, BS, DIN

◎ 全開式福特
Swing Foot Valve



◎ 規格 SIZE: 2-1/2"~6"

◎ 接口 END: 平口 SOCKET/牙口 THREADED

◎ 顏色 COLOR: 灰色 GREY

◎ 標準 AVAILABLE STANDARDS:
CNS, JIS, ANSI, BS, DIN

◎ 全開式福特-法蘭口
Swing Foot Valve - Flanged End



◎ 規格 SIZE: 2"~8"

◎ 接口 END: 法蘭口 FLANGED

◎ 顏色 COLOR: 灰色 GREY

◎ 標準 AVAILABLE STANDARDS:
CNS, JIS, ANSI, BS, DIN

福特底閥 FOOT VALVE

逆止閥 CHECK VALVE

◎ 進水管式福特
Foot Valve - Hose End



◎ 規格 SIZE: 1-1/4"~4"

◎ 接口 END: 平口 SOCKET

◎ 顏色 COLOR: 灰色 GREY

◎ 標準 AVAILABLE STANDARDS:
CNS, JIS, ANSI, BS, DIN

◎ 全開式中間閥
Swing Check Valve



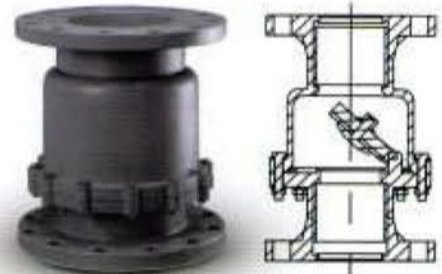
◎ 規格 SIZE: 2"~6"

◎ 接口 END: 平口 SOCKET/牙口 THREADED

◎ 顏色 COLOR: 灰色 GREY

◎ 標準 AVAILABLE STANDARDS:
CNS, JIS, ANSI, BS, DIN

◎ 全開式中間閥-法蘭口
Swing Check Valve - Flanged End



◎ 規格 SIZE: 2"~8"

◎ 接口 END: 法蘭口 FLANGED

◎ 顏色 COLOR: 灰色 GREY

◎ 標準 AVAILABLE STANDARDS:
CNS, JIS, ANSI, BS, DIN

